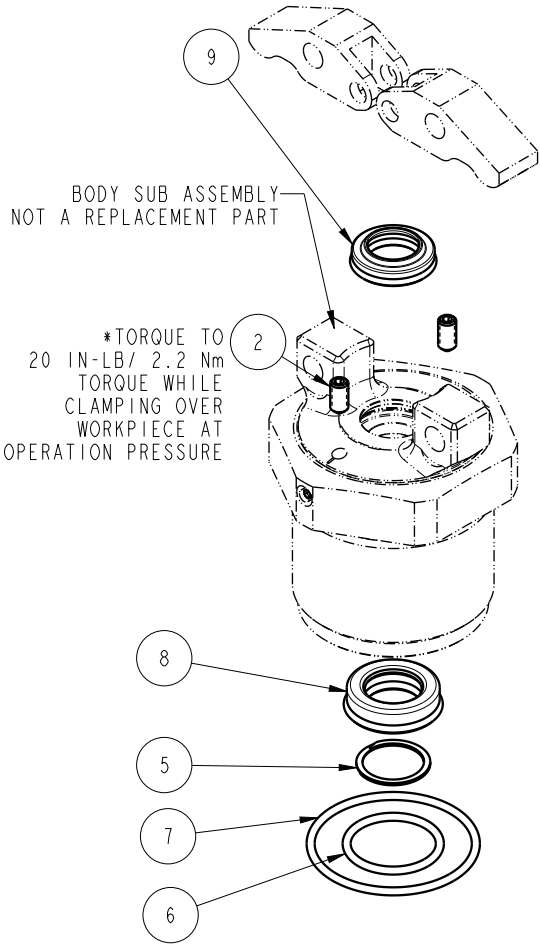


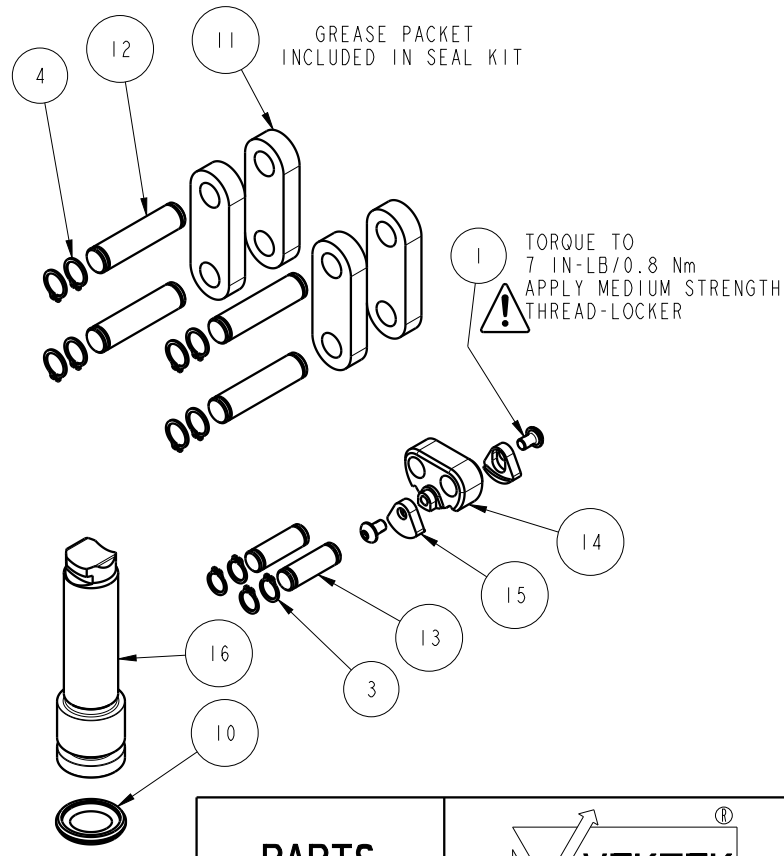
NO	QTY	PART NO	DESCRIPTION	STD SEAL KIT
1	2	21500061	SCREW, CAP, BTNH, M2.5 X 4, SSTL	
2	2	21500317	SCREW, SET, CUP PT, M4 X .7 X 8	
3	4	23050031	RING, RTNG, EXT, 0.197	X
4	8	23050032	RING, RTNG, EXT, 0.236	X
5	1	23050050	RETAINING RING, SPIRAL, INTL	X
6	1	39000021	O-RING, (-018)	X
7	1	39001051	O-RING, (-028)	X
8	1	39052059	SEAL, ROD, RSD, 12, 85A, AU	X
9	1	39053040	SEAL, WIPER, SNAP IN, WED, 12, 94A, AU	X
10	1	39056031	SEAL, CAP, PISTON, 15, 94A, AU	X
11	4	81600145	LINK, LC, 7MPa, 25B	
12	4	81600150	PIN, LINK, LC, 7MPa, 25B	
13	2	81600155	PIN, PLUNGER, LC, 7MPa, 25B	
14	1	81600280	PIVOT, TL360-TWIN, 1100 LB	
15	2	81600283	COVER, PIVOT, TL360-TWIN, 1100 LB	
16	1	81600292	PLUNGER, TL360-TWIN, 1100 LB	
N/A	N/A	60160212	KIT, SEAL, ASSY, LC, CM, TL360, DA, 11001b	NOTED

\*NOTE: LINK CLAMP  
16-4215-20 REVISIONS  
A USES SET SCREW 21440043




BODY SUB ASSEMBLY  
NOT A REPLACEMENT PART

\*TORQUE TO  
20 IN-LB/ 2.2 Nm  
TORQUE WHILE  
CLAMPING OVER  
WORKPIECE AT  
OPERATION PRESSURE



GREASE PACKET  
INCLUDED IN SEAL KIT

TORQUE TO  
7 IN-LB/0.8 Nm  
APPLY MEDIUM STRENGTH  
THREAD-LOCKER

<b>PARTS LIST</b>	 VEKTEK, INC. 1334 E. SIXTH AVE. P.O. BOX 625 EMPORIA, KS. 66801 U.S.A.	
	ASSEMBLIES AFFECTED 16-4215-20	PARTS LIST, ASSY, LC, CM, TL360, DA, 11001b ROTARY LUG
SIZE A	PL1632	REV B

B	5051	RELEASE	ALS	2/28/23
REV	IN ACCORDANCE WITH ECN	EFFECTIVE DATE	REVISED BY	DATE
DRW BY:	A. THOMSEN	DRAWING STATUS: <b>Released</b>		
DATE:	05-MAY-2020	PRODUCTION APPROVED FOR RELEASED STATUS ONLY		